

Dwelling in Via Maestri Campionesi

Archea Associati

Milan, Italy

program: residential
project: 2009
completion: 2012
client: Gielles Milano

photo by Pietro Savorelli

www.archea.it

Nel corso del 2009, Archea subentra nel progetto per la costruzione di un edificio residenziale in via Maestri Campionesi, nel centro di Milano.

Il progetto si riferisce ai prospetti esterni, agli spazi comuni dell'edificio comprensivi di ingresso e ambienti di distribuzione – sia agli appartamenti sia ai box auto del piano terra e dei livelli interrati – agli appartamenti duplex ai piani attici, sesto e settimo, che si aprono sulle loggie caratterizzanti i due prospetti principali.

La facciata su via Maestri Campionesi si sviluppa in altezza stretta tra i corpi di fabbrica attigui; i livelli sono segnati da una successione di fasce orizzontali sovrapposte, una scansione interrotta da un ritmo di lame verticali montate in maniera sfalsata da piano a piano e aggettanti verso l'esterno secondo inclinazioni diverse. Tali elementi sono in vetro-resina dipinta alternativamente con vernice metallica o con color panna-oro.

A chiudere la successione di fasce orizzontali, la scansione delle lame si modella superiormente in una serie di abbaini di larghezza disomogenea e lascia spazio, al piano terra, a due volumi affiancati, un pieno riflettente la luce e un vuoto in ombra, arretrato rispetto al filo strada, ospitante i due ingressi, pedonale e carrabile. La superficie piena è rivestita da una serie di lastre in alluminio che si ripetono sulle due fasce verticali che delimitano lateralmente la facciata e sui fronti laterali chiusi su tutta la superficie.

Archea took over the task of planning the construction of a residential building in via Maestri Campionesi in central Milan in 2009.

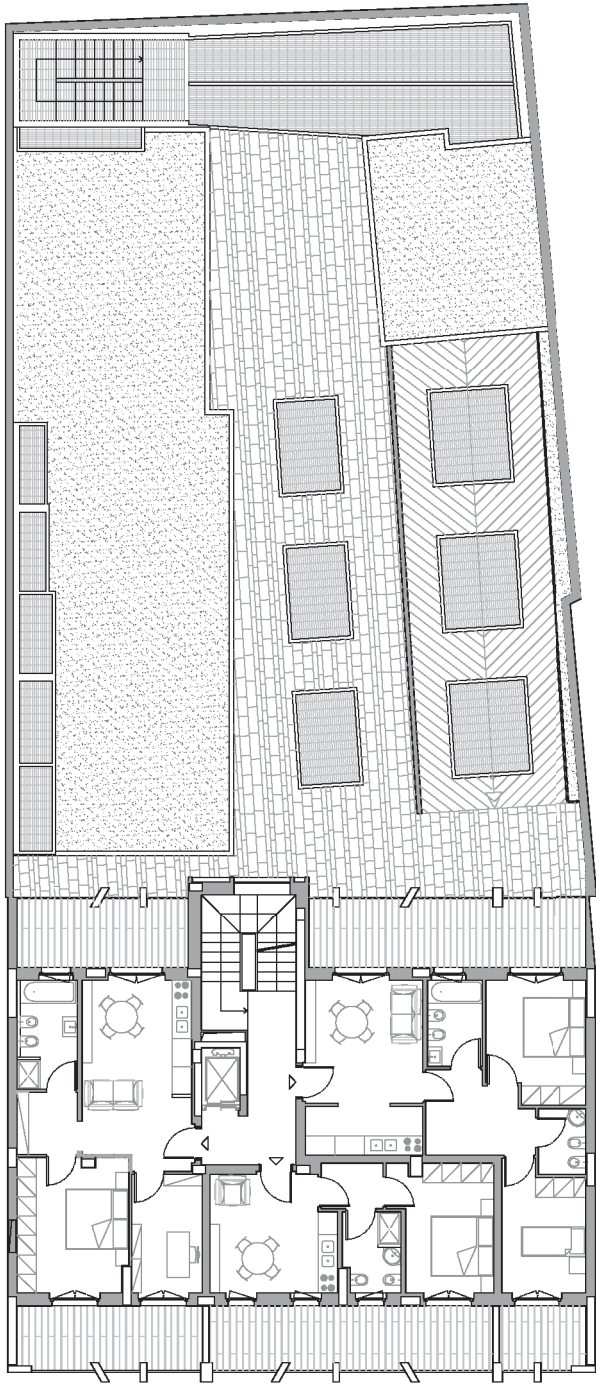
The project centres on the external facades, the public areas of the building including the entrance hall and connecting areas – both to the apartments and to the garages on the ground floor and in the basements – and the duplex apartments on the top floors, the sixth and seventh, which open to loggias that give the two main facades their distinctive character.

The façade on via Maestri Campionesi has a vertical development, its width being limited by the two adjacent buildings. The position of the floors is indicated by a sequence of superimposed horizontal bands, whose rhythm is interrupted by a series of vertical blades installed so as to form an irregular pattern from floor to floor, which project outwards with different inclinations.

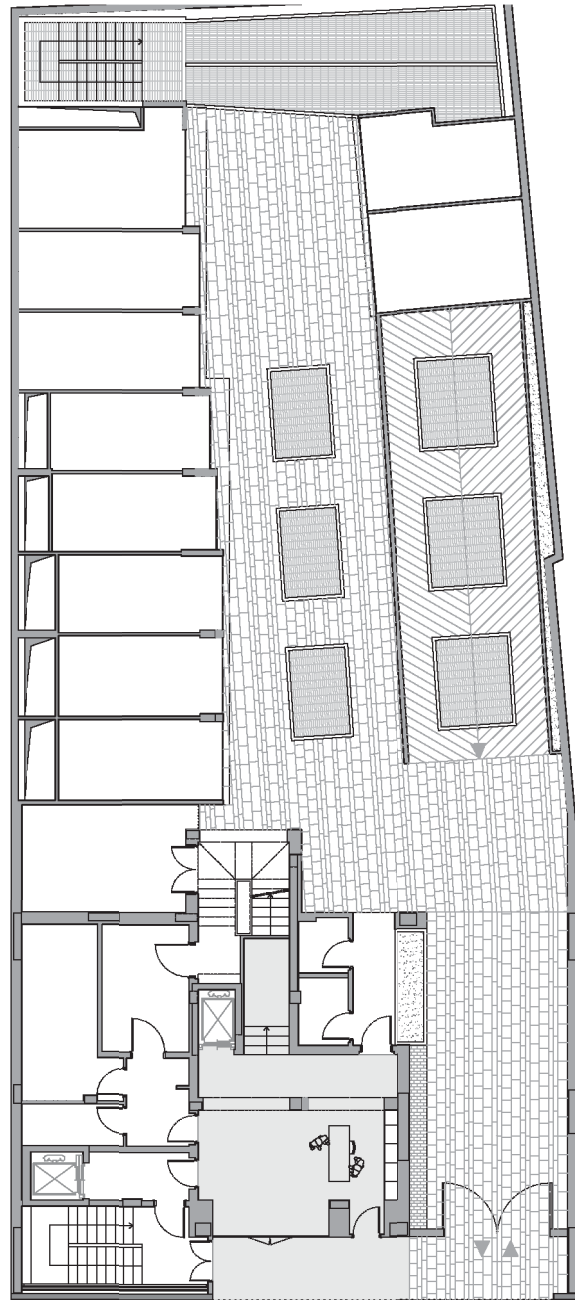
These elements are in fiberglass, painted alternatively with metallic paint or with cream-ochre colour.

Closing the succession of horizontal bands, the series of blades is modelled on the upper part of the building, to form a series of dormers of varying width and to leave space for two volumes on the ground floor, a massive one which reflects the light and an empty one in shade, withdrawn from the wall that is flush with the street, which hosts the two entrances, for pedestrians and for vehicles. The entire surface is faced by a succession of aluminium plates that are repeated to form the two vertical bands that cover the lateral edges of the façade of the building and its side walls, closed in every part.

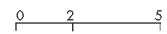




first floor



ground floor





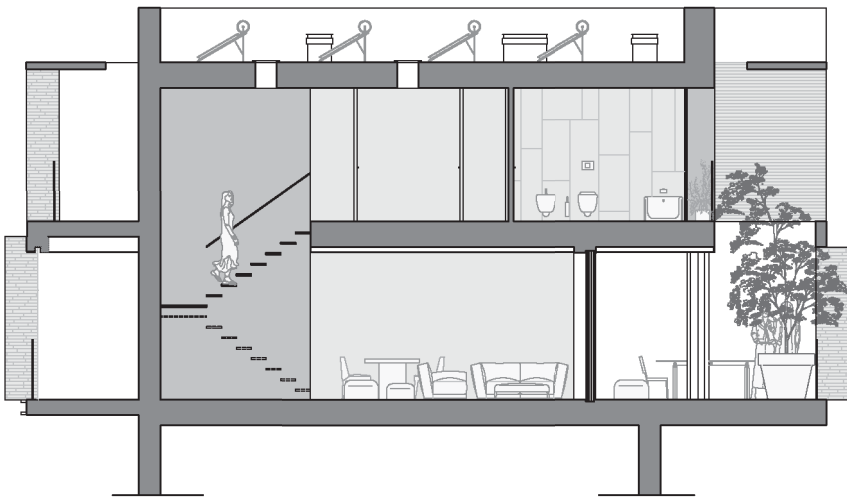
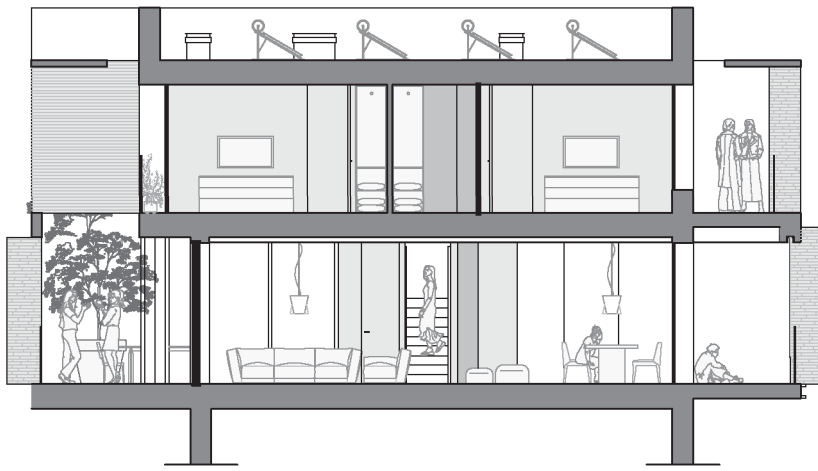


main elevation

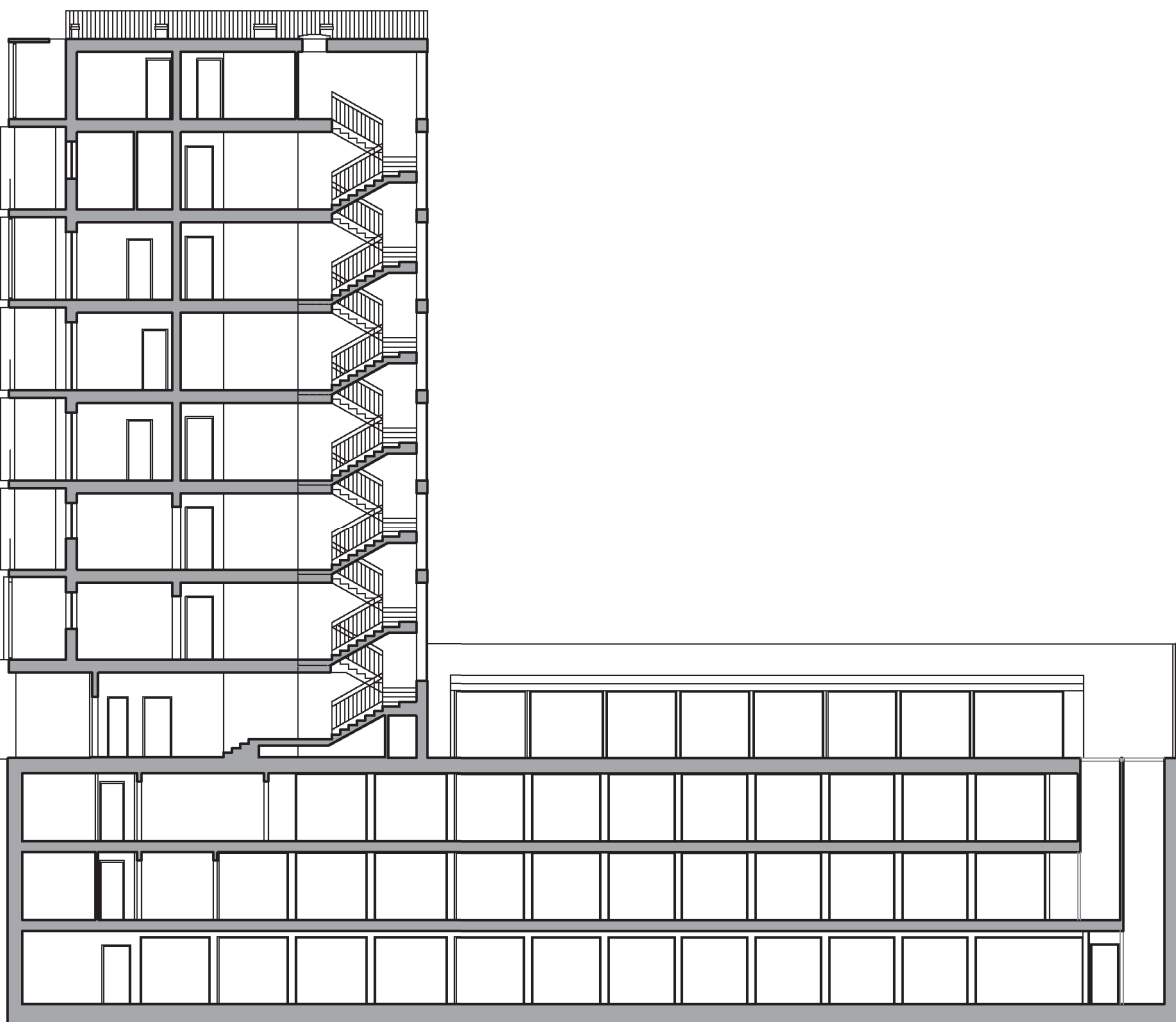
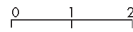




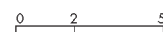


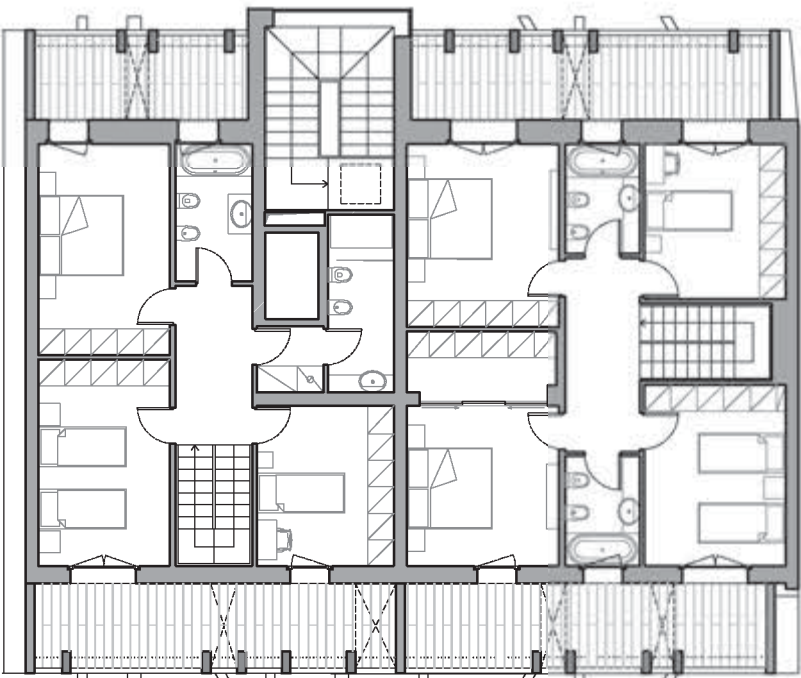


longitudinal sections

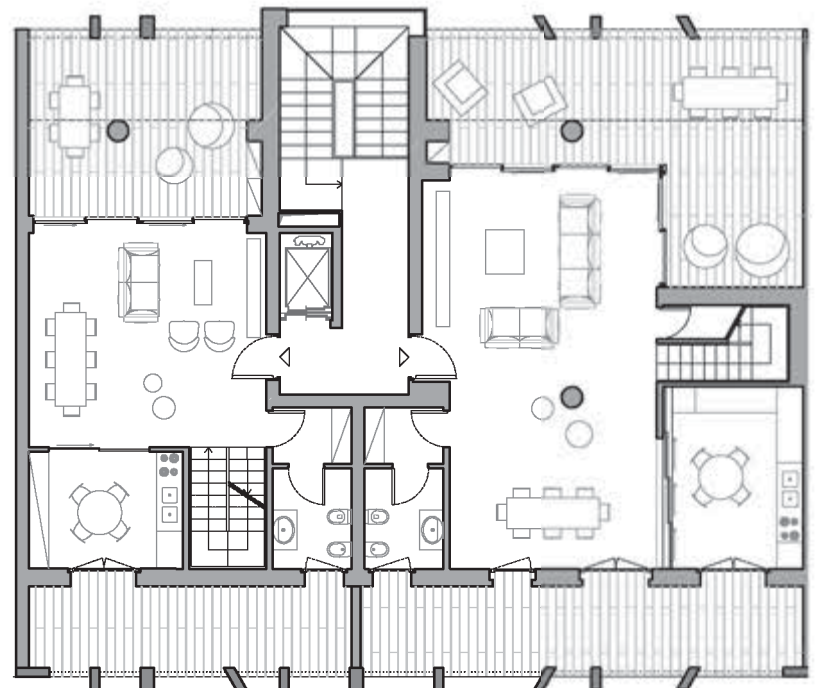


cross section





7th floor



6th floor

